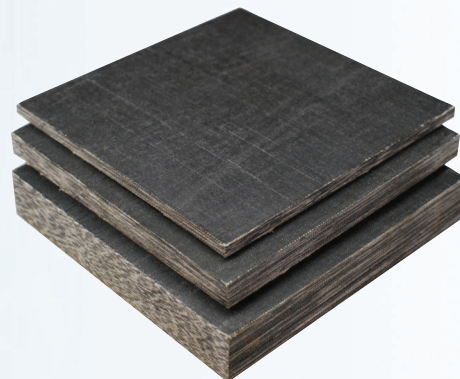


Fabreeka pads are the original “fabric reinforced” bearing pad used in industry since 1918. The multiple laminations of rubber and fabric allow for large loading with minimal creep and virtually no shape factor associated with unreinforced bearing pad materials.



Fabreeka pads were first used as a bridge bearing in 1936 and are commonly used as a structural bearing element accommodating surface irregularity and rotations between load bearing faces. Fabreeka material is also used for vibration and shock applications.

### Features and Attributes

- Distributes load between two structural elements evenly
- Accommodates non-parallel, load bearing surfaces
- Allows for rotations up to 0.02 radians under high pressure
- Ultimate compressive strength of 20,000 psi
- Meets AASHTO 18.4.9.1, MIL-C-882 and most state DOT specifications
- Provides vibration and shock isolation in structural applications

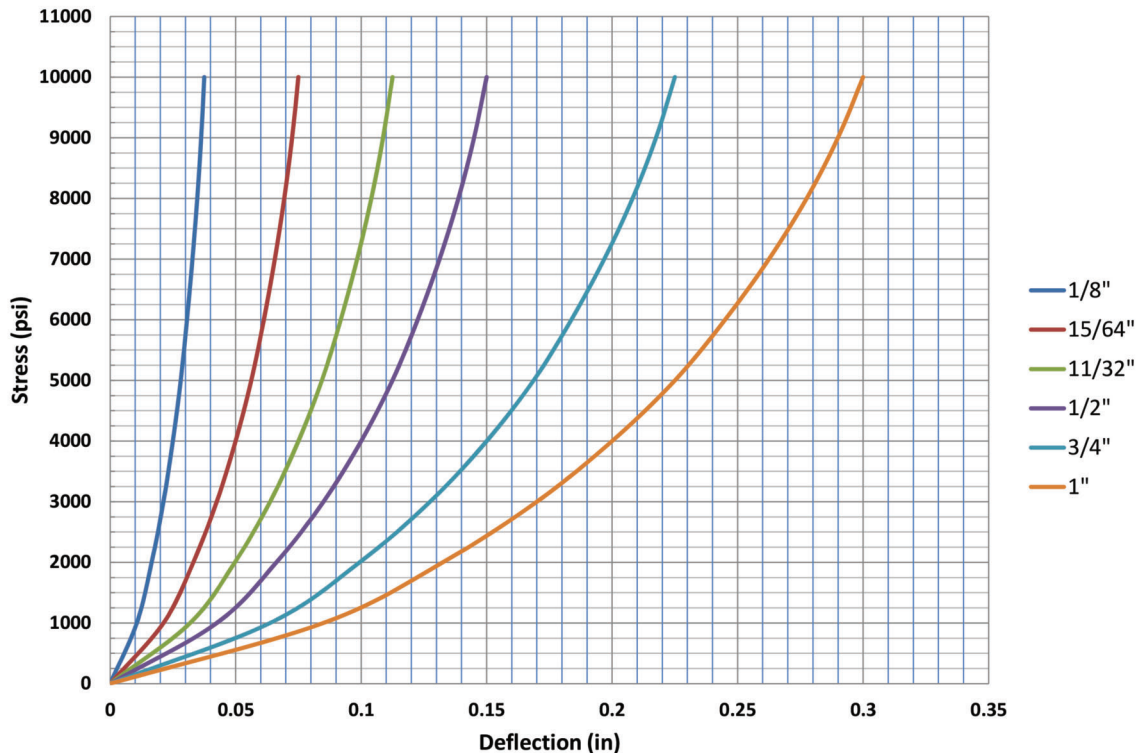
### Physical Properties

<u>PROPERTY</u>	<u>TEST</u>	<u>SPECIFICATION</u>
<i>Hardness:</i> Shore “A”	ASTM D2240	90±5
<i>Tensile Strength:</i>	ASTM D412	5,500 psi (min)
<i>Ultimate Elongation:</i>	ASTM D412	17% (max)
<i>Compressive Strength:</i>		10,000 psi (min)
<i>Modulus of Elasticity:</i>		23,000 psi (max)
<i>Environmental:</i>	MIL-E-5272	Pass

## Specification for Fabreeka® Bearing Pads

The bearing pads shall be manufactured of all new (unused) materials and composed of multiple layers of prestressed 50/50 cotton-polyester blend duck, 8.1 ounce per net square yard, duck warp count  $50 \pm 1$  threads per inch and filling count  $40 \pm 2$  threads per inch, impregnated and bound with a high quality, oil-impervious nitrile rubber compound, containing rot and mildew inhibitors and anti-oxidants, compounded into resilient pads of uniform thickness. The pads shall withstand compressive loads perpendicular to the plane of laminations of not less than 10,000 psi before breakdown.

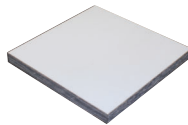
### Fabreeka Pad Static Deflection



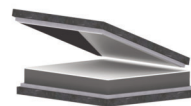
## Additional Products for Building & Construction



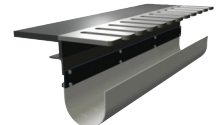
SA-47 Bearing Pads



PTFE Bearing Pads



Structural Expansion Bearings



Flexible Drain Trough

If you have any questions regarding how Fabreeka's products comply with various regulations, please refer to our website at [www.fabreeka.com/product-compliance](http://www.fabreeka.com/product-compliance).

**World Headquarters**  
**Fabreeka International, Inc.**  
PO Box 210  
1023 Turnpike Street  
Stoughton, MA 02072  
Tel: (800) 322-7352  
Tel: (781) 341-3655  
Fax: (781) 341-3983  
E-mail: [info@fabreeka.com](mailto:info@fabreeka.com)  
[www.fabreeka.com](http://www.fabreeka.com)

**Germany**  
**Fabreeka GmbH Deutschland**  
Hessenring 13  
D-64572 Büttelborn  
Tel: 49 - (0)6152-9597-0  
Fax: 49 - (0)6152-9597-40  
E-mail: [info@fabreeka.de](mailto:info@fabreeka.de)  
[www.fabreeka.de](http://www.fabreeka.de)

**England**  
**ACE Fabreeka UK**  
Unit 404 Easter Park  
Haydock Lane  
Haydock WA11 9TH  
Tel: 44 - (0)1942 727440  
Fax: 44 - (0)1942 717273  
E-mail: [info@ace-fabreeka.com](mailto:info@ace-fabreeka.com)  
[www.fabreeka.co.uk](http://www.fabreeka.co.uk)

**Taiwan**  
**Fabreeka International, Inc.**  
PO Box 1246  
Tainan 70499  
Taiwan  
Tel: 886-935 273732  
E-mail: [info@fabreeka.tw](mailto:info@fabreeka.tw)  
[www.fabreeka.com.cn](http://www.fabreeka.com.cn)