

Transformer/Reactor Vibration and Noise Isolation

Fabcel® pads and transformer mounts control structure-borne vibration and noise in single- and three-phase transformer installations.

Fabcel® transformer mounts have reduced transformer noise by 3 to 5 decibels when used as footings for single- and three-phase transformers. They help meet OSHA noise pollution standards.

Fabcel® isolation material has molded recessed cells to allow flow of rubber when under load while maintaining lateral stability. This design eliminates the shape factor associated with elastomeric pads, and provides a positive grip when under load.

These pads and mounts are resistant to weather, most oils, mildew, sunshine, dampness and other environmental and climactic conditions. Additionally, they provide for air circulation under transformers to help prevent base corrosion.

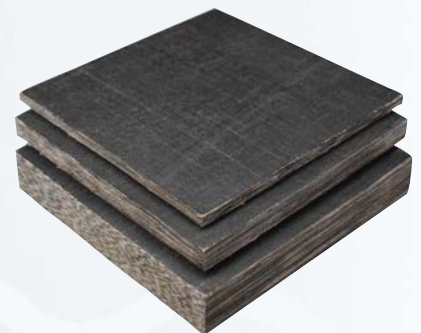


The mounts include an anti-skid surface and a galvanized load distribution plate to distribute the load evenly on the pads when the transformer or skid base support is smaller in size than the mount. The load should be centered on the mount.

Additionally, transformer/reactor OEM's use several configurations of Fabreeka® pre-formed fabric pads as bumper pads to absorb shocks/forces in interrupters.

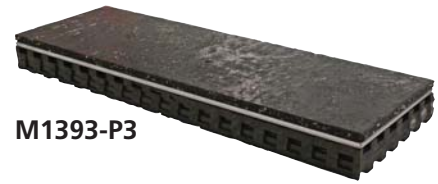


Fabcel® pads under a transformer prevent "walking" and provide vibration and noise reduction.

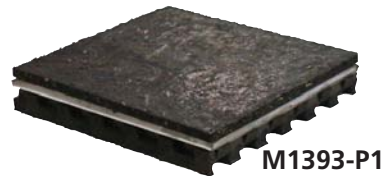


Fabcel® Transformer Mount - Installation Guidelines

1. Determine the number of mounts required based on the total (wet) weight of the transformer.
2. To determine the correct number of mounts, divide the total machine weight by the load capacity of the transformer mount. When using full size pads, please consult with Fabreeka for load and design data.
3. For uneven, out-of-level floors, use shims below mounts to maintain level.



M1393-P3



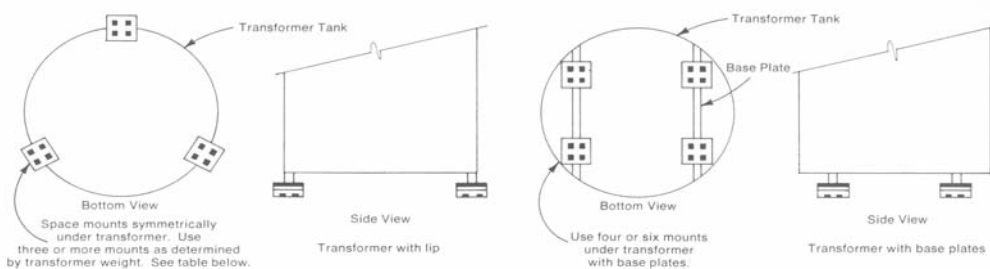
M1393-P1

Note:

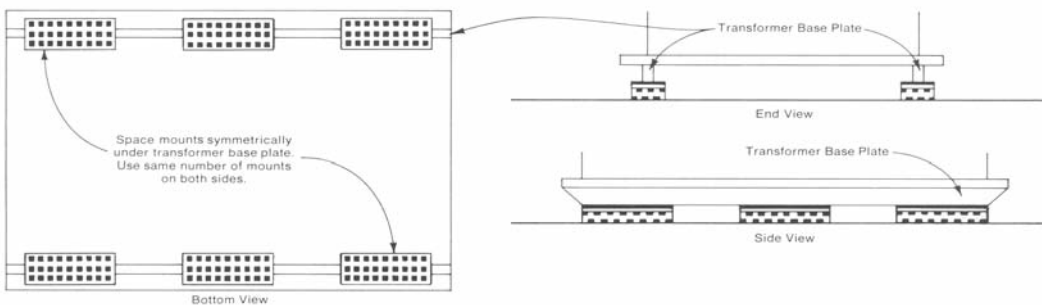
The total (wet) weight may not be evenly distributed - confirm weight distribution with manufacturer when determining the number of mounts to use.

Item	Dimension (W x L x H)	Max Load (lbs)	Deflection at Max Load	Durometer
M1393-P1	3" x 3" x 9/16"	450	0.06	50
M1393-P3	3" x 9" x 7/8"	1,350	0.11	50

Example of a single-phase Fabcel® transformer mount installation.



Example of a three-phase Fabcel® transformer mount installation.



United States

PO Box 210
1023 Turnpike Street
Stoughton, MA 02072
Tel: (781) 341-3655
or: 1-800-322-7352
Fax: (781) 341-3983
info@fabreeka.com

Canada

Tel: 1-800-322-7352
Fax: (781) 341-3983
info@fabreeka.com

United Kingdom

8 to 12 Jubilee Way
Thackley Old Road
Shipley, West Yorkshire
BD18 1QG
Tel: 44-1274-531333
Fax: 44-1274-531717
info@fabreeka-uk.com

Germany

Hessenring 13 (D-64572)
Postfach 103
D-64570, Buttelborn
Tel: 49-6152-9597-0
Fax: 49-6152-9597-40
info@fabreeka.de

Taiwan

14F, No. 230 Huangung
East Road
Jung-Li City
320 Taiwan
Tel: 886-3-451-7989
Fax: 886-3-451-7992
dchao@fabreeka.com